

CHANGES IN TAJIMA DG16 BY PULSE 16.1.3.7297

The latest release of Tajima DG16 by Pulse includes a large number of bug fixes and feature enhancements. The following sections summarize these enhancements.

IMPORTANT STABILITY IMPROVEMENTS

In previous builds of Tajima DG16 by Pulse, the software would occasionally be subject to freezing or spontaneously exiting, particularly when a user was adjusting settings using the Ribbon interface. These stability issues have been resolved in the latest version.

CHANGES TO SYSTEMS LEVEL AVAILABILITY

- The “Email design” function, which allows you to send embroidery and/or artwork designs directly by email, has been extended to the Composer level.
You can email the current design directly from your workspace by selecting File—Export—Email Design...
Note: Embroidery and Artwork designs can also be exported by email from the Database View dialog in Librarian.
- The “Cross Method” and “Override End Inset” settings which are associated with the “Automatic Overlap” setting, are now visible only in Illustrator Extreme and higher.

USER INTERFACE

Properties on the Ribbon

When a Bead segment is selected, the settings on the Ribbon will now include the Bead style” setting alongside the other Bead Properties, such as the Bead tack-down length, bead diameter, and bead pattern settings.


Environment Setting - Fit to Window after Pasting

There is a new option on the User Settings – Environment tab called “Fit to window after pasting a segment.” This setting can be useful when you are copying a segment from one design tab and pasting it into another. When checked, this option will cause the workspace view to automatically “zoom out”, if necessary, such that the pasted segment is visible in the design it has been pasted into.

If left unchecked, you can copy and paste from one design to another without affecting the zoom level of either design view.

Opening the Auto Kerning Wizard

Auto Kerning Wizard is a Font Manager function that can be used to set the kerning values of a custom font. Access to this function has been added to the Font tab of the ribbon; you can now open it from the “Kernings” drop-down list.

The Auto Kerning Wizard can also still be opened by clicking the Auto Kerning Wizard  icon on the Processing tab.

STITCH GENERATION

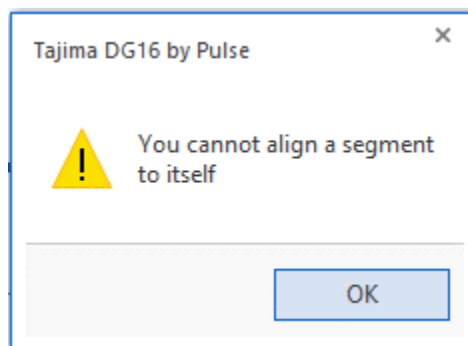
Branching Stitch Generation Improved

The process that generates the connecting stitches between branched segments has been improved. The new branching algorithm effectively reduces the length of connections between these branched segments, leading to better results. This is especially useful for improving the short connections to “islands” in lettering segments.

DESIGN EDITING TOOLS

Align Segment tool – Warning message added

When using the Align segment tool, it is possible to mistakenly select the original segment. A warning message has been added to remind the user that a segment cannot be aligned with itself.



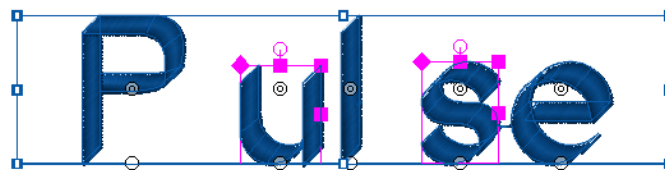
DrawFusion Corel support

Tajima DG16 by Pulse now supports CorelDraw 2020 for the DrawFusion tool.

TEXT TOOLS AND SETTINGS

Sliding Letters using the Letter Beads

A new feature has been added to the “select bead” functionality. Previously, it was only possible to select and slide individual letters, or groups of adjacent letters, along the text baseline. With the new functionality, it is now possible to select (using Ctrl + click) any arbitrary set of letters in the text segment, and click and drag them left or right along the baseline

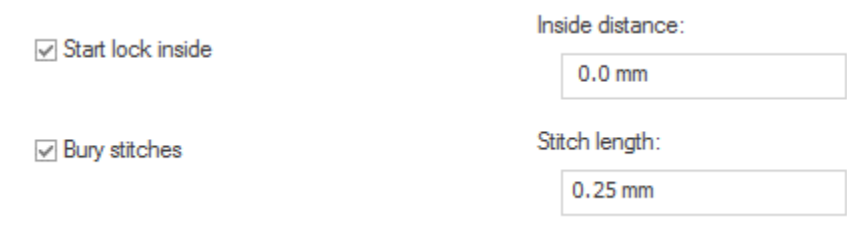


Bury Stitches Segment Setting

The “Bury Stitches” option is a setting that can be applied to text segments where the individual letter spacing is very small. This setting allows for very short connecting stitches to be generated, which will be pushed down deep enough into the fabric to effectively be invisible. This eliminates the need for making an excess number of trims between letters that are close together.

Previously, “Bury stitches” could only be selected when the “Automatically Adjust Kerning” property was also selected. The setting has now been modified so that it can be applied independently of the automatic kerning. There is also an associated “Stitch Length” parameter that becomes active when “Bury stitches” activated.

To apply Bury stitches, select the text, open Selection Settings – Text – Connections, and tick the Bury stitches check box.



The screenshot shows a settings panel with two checked options: 'Start lock inside' and 'Bury stitches'. To the right of 'Bury stitches', the 'Stitch length' is set to 0.25 mm. Above it, the 'Inside distance' is set to 0.0 mm.

<input checked="" type="checkbox"/> Start lock inside	Inside distance: 0.0 mm
<input checked="" type="checkbox"/> Bury stitches	Stitch length: 0.25 mm

Automatically Adjust Kerning

The “Automatically Adjust Kerning” feature is an option in the Connection Settings for Text segments. Two significant adjustments have been made to improve the application of this option

- Automatically Adjust Kerning will now only be applied to the kerning between adjacent characters in a word and will not be applied between words separated by the “space” character.
- The default kerning value has been changed to 1.0 mm.

Substitution for Missing Fonts

The automatic procedure that occurs when you open a file which includes one or more missing fonts has been improved. The process of font substitution has been changed, such that you will be able to see the design with the missing font intact.

When a file with missing fonts is opened, the following steps take place:

1. A warning message appears on top of the workspace window, advising that the file contains one or more missing fonts. The font(s) that are missing will be listed in the message.



This design uses the following fonts that are not available:

Font 1

Font 4

☐ Do not show this message again.

OK

2. After clicking “Okay” to close the dialog, the file will open. Any text strings that use the missing font(s) will appear in the design, in the original font.
3. If a text using one of the missing font is selected, you will see the name of the original font in the Properties Panel, but it will be displayed with an asterisk * at the end of the font name, indicating that it is an unavailable font.
4. If, once selected, any properties of the string are adjusted, then and only then will the font substitution occur.

FONT MANAGER

Merge Characters Command

In cases where two (or more) digitizers are working independently on creating a new font, the situation may arise where multiple font files (.FON) are created. In order to make a single font file, DG16 now includes a “Merge font” command.

To use this command, first open one of the font files (whichever one) and then click the Merge font tool on the tab. This will open a dialog, allowing you to browse to find the other .FON files that you want to merge. Then, when you save the original font again, it will now include all the characters in both fonts.

FONTS

Updates to Tajima DG16 by Pulse Fonts

The following changes have been made to the Tajima DG16 by Pulse fonts. These fonts have been updated, and new versions added to the install as standard fonts:

- **Antique Monogram**
- **Banco**
- **Brantford New**
- **Russian**

In addition, the **Billboard** font has been added to the font list as an optional font.

“WIZARD” TOOLS

“Create a Monogram” font height issue fixed

In the “Create a Monogram” dialog, there are a number of different one-, two-, and three-letter combinations (“styles”) to choose from.

In prior versions of the software, there was a problem with some of these styles – when selected, the default font height that was being applied was much too small, such that the monogram lettering was barely visible in the preview. This problem has now been rectified, and all of the Monogram “styles” will now all work as expected.

Autodigitizer Wizard Enhancements

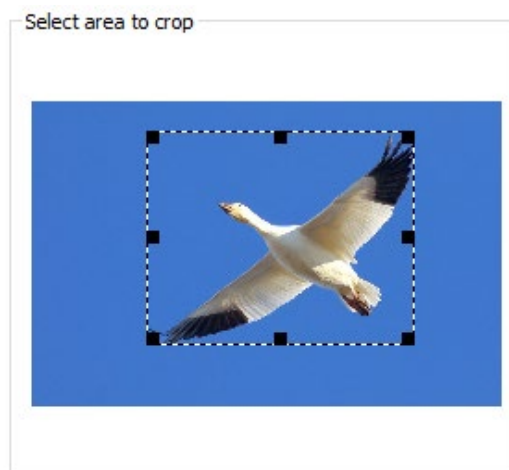
The Autodigitizer is a “wizard”-style tool that creates a design in the workspace based on an imported image file. The image can be rendered either as embroidery or as artwork (vector path) segment. In the latest Tajima DG16 by Pulse version, a number of significant improvements have been made to the Autodigitizer Wizard tool.

PNG files: The Autodigitizer can import images of a wide variety of different file types, and this list has now been expanded to include the portable network graphics (*.PNG) file type. Note that when a PNG image includes a single transparency color, the transparency will be preserved when it is rendered.

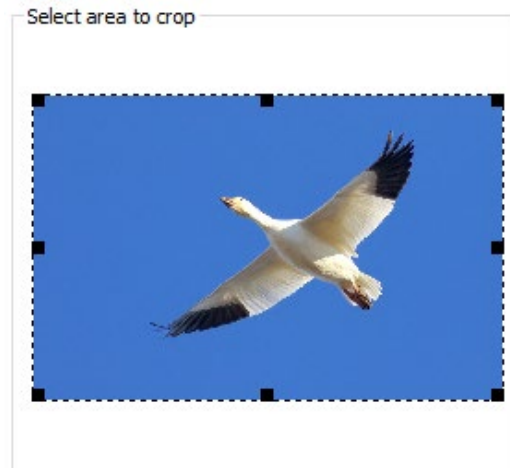
Constrain proportions: On the Image Transformation page, there is a new “Proportional” checkbox; when checked, any change that you make to one of the “Final image size” fields (width/height) will be applied proportionally to the other dimension. Note that this option will be selected by default. If you want to change one dimension without changing the other, simply de-select the “Proportional” box and edit the Final image size fields as normal.

Include background in dimensions: Depending on the individual image, you may or may not want to include the background when you set the overall size of the final design (in the “Final Dimensions” fields). A check box has been added to the “Image Transformation” page of the Autodigitizer dialog to effect this change.

- When “Include background in dimensions” is not checked, the crop box shrinks to include only the central part of the image. (Note that this is the default setting).



- When “Include background in dimensions” is checked, the crop box extends to include the whole background of the image.



Also note that this setting only sets the size prior to cropping; you can still crop the image further, in both cases.

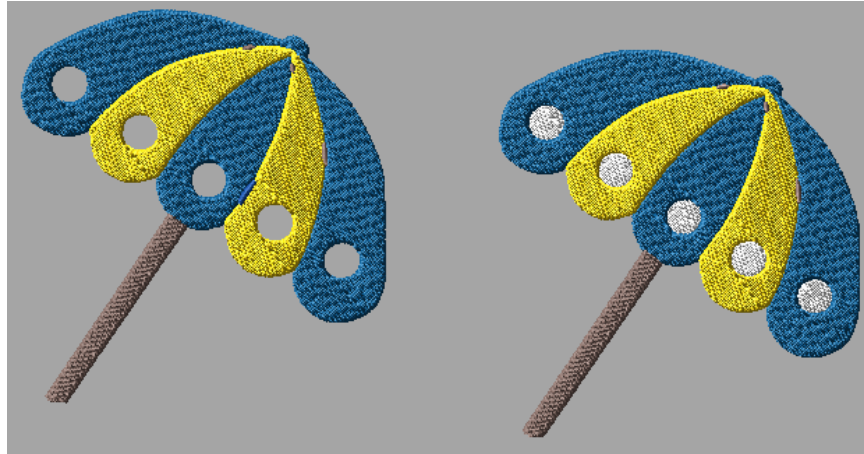
Revisions to the Automatic Segments options: The Automatic Segments page of the Autodigitizer wizard is where you determine the range of widths that the Autodigitizer will apply a given segment type to. This page has new option “Create Satin columns and Steil segments”. If enabled, it means that your final result will (potentially) consist of Run, Steil, Satin and Complex fill segments; this was the normal behavior in previous versions of the Autodigitizer. Now, however, you will have the option of not applying this option, in which case the final design will consist of Run and Complex fill segments only (and the “Max. width” slider controls for Steil and Satin segment will be inactive).

Note also that it is still possible to digitize the image as artwork only, by checking the “Create only artwork segments” box.

Improved handling of “background color” stitch generation: One of the existing Autodigitizer Features is the “Stitch Background” option, located on the Judgement page. When enabled, this option means that the background color of an image will be considered as part of the design, and is therefore rendered into embroidery. If it is left un-checked (the default case) the background color will be “passed over” by the wizard, and no background embroidery will be created.

However, if the image includes enclosed areas that happen to be the same color as the background, this can result in problems in the final design, if the “Stitch Background” option is not selected. In these cases, the enclosed areas will also be ignored by the Autodigitizer judgement settings, resulting in spaces or gaps in the final embroidery design.

To avoid this problem, a new option has been added to the Judgement page, called “Stitch inner areas of background.” When enabled, the Autodigiizer will generate all enclosed areas that are in the background color, even when “Stitch Background” is not selected.



Left design, “Stitch inner areas” disabled; right design, “stitch inner areas” enabled.

Ignore Small Areas option: This is a new Autodigitizer option on the Judgement page. When enabled, it ensures that very small areas in the digital image are not turned into stitch segments. The result is a cleaner final design, with fewer color changes.

Note, however, that enabling the “Ignore small areas” may result in a loss of some detail in the final design.

Default complex fill pattern: A change has been made to the default pattern that will be applied to any complex fill patterns created by the Autodigitizer. Such segments will now be generated using the “Smooth” fill pattern.

ARTWORK TOOLS & SETTINGS

Create Boundary tool

In previous build of Tajima DG16 by Pulse, an issue arose with adding a pentagon outline using the “Create Boundary” tool. This has now been remedied – all the shapes in the “Create Boundary” tool will produce the correct boundary shape.

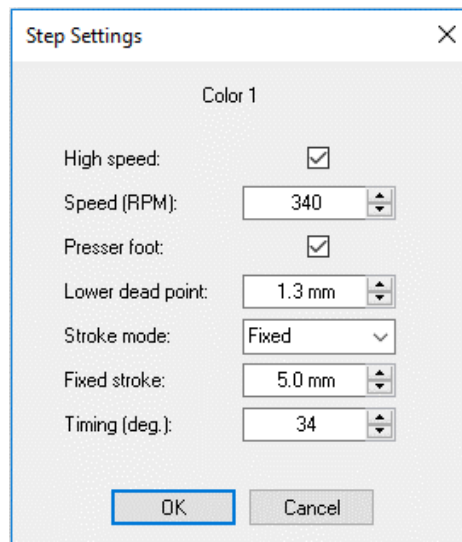


DESIGN PROPERTIES

Step Settings

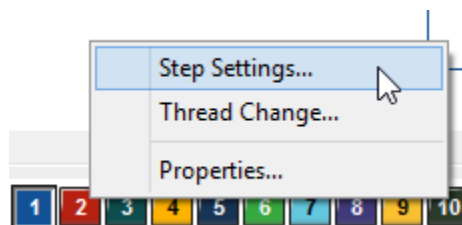
The Step settings are a new way to manage changes in sewing speed (i.e. RPM) and Presser Foot settings in a design.

With the Step settings, the fundamental “unit” is that portion of a design between one color change and the next; each step can therefore consist of one, two, or many segments, just so long as the color does not change. You can create Steps individually for each color “block” in the design, and adjust RPM and Presser Foot settings (i.e. Lower dead point, stroke mode, Fixed stroke distance (if applicable) and Timing) independently by way of the Step Settings dialog.



There are several different ways to open the Step settings dialog:

- Click on the needle in the color palette, and right-click and select Step Settings from the context menu.



- Select File – Design Properties, and select the Presser Foot tab.
- In Stitch Select mode, select the color change, right-click to open the Command dialog, and click the Settings button.
- In the Segment Settings dialog select General – Commands – Thread settings.

Note that you can set an overall machine speed (RPM) value in the Design Properties in the Production tab. However, this speed will be over-ridden by the High-speed values that are apply in individual Steps in the design.