

CHANGES IN TAJIMA DG15 BY PULSE 15.1.18.6245

The following is a list of the new features and improvements included in Tajima DG15 by Pulse since the previous official release.

HARDWARE REQUIREMENTS

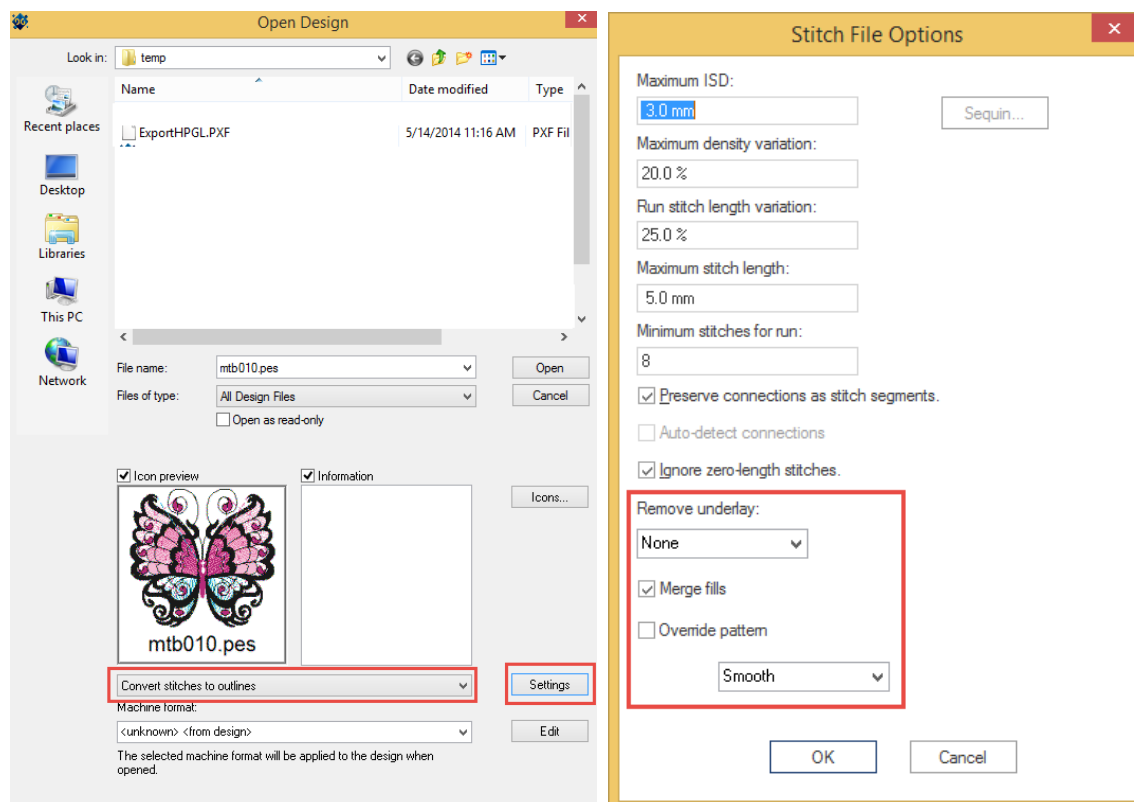
DG 15 supports Windows 7, Windows 8 and Windows 8.1 and is built on a 64-bit platform. Windows XP, Vista, and 32 bit-based operating systems are no longer supported.

INSTALLATION

The fonts Baguette and Jiggles have been added to the installation, which are available for purchase.

STITCH TO OUTLINE CONVERSION

Stitch to Outline has been improved to reduce the number of segments in a converted design. New Stitch to Outline options are now available to detect complex fills, remove underlay and set a default pattern. These settings can be found when opening a design as outlines by clicking the Settings button in the File-Open dialog.



Remove Underlay

The remove underlay setting will attempt to detect and remove underlay stitches when converting a stitch file to outlines. The remove underlay function has three settings, Simple, Aggressive and None. These settings determine the tolerance used for the detection of underlay stitches by the Stitch to Outline process.

Merge Fills

Typically the Stitch to Outline Process converts fill stitches into multiple satin path segments with a fill pattern. The Merge Fills option will reduce the number of outline segments in a design and will also convert fills to Complex Fills when possible. Segments will be converted to Complex Fills under the following conditions:

- There is a single stitch angle detected throughout the shape.
- The shape would need to be broken into multiple satin path segments – If a shape can be reproduced in a single satin segment with a pattern, it will not be converted to a Complex Fill.
- The shape is large enough and can be recognized using the Complex Fill detection method.

If these conditions are not met, the Stitch to Outline Process will convert the shapes to Satin Path segments with fill patterns just as it has in previous versions of DG.

Override Pattern

The Override Pattern setting enables you to select a fill pattern to be used if an appropriate pattern is not detected by the Stitch to Outline process. Available patterns are Smooth and Pattern 1.

Stitch to Outline Notes

The settings used in the File-Open dialog are also applied when using the Process-Stitch to Outline option on selected segments.

The Stitch to Outline process attempts to detect how a design was created based on the placement of the stitches. Opening a design as Outlines is useful for editing features such as changing density or underlay but the Stitch to Outline process may produce stitches that are not the same as the original stitches. It is preferred to open a design as Stich Segments when not performing outline-editing functions to ensure the preservation of the original stitches.

INPUT / OUTPUT

HPGL/PLT Output

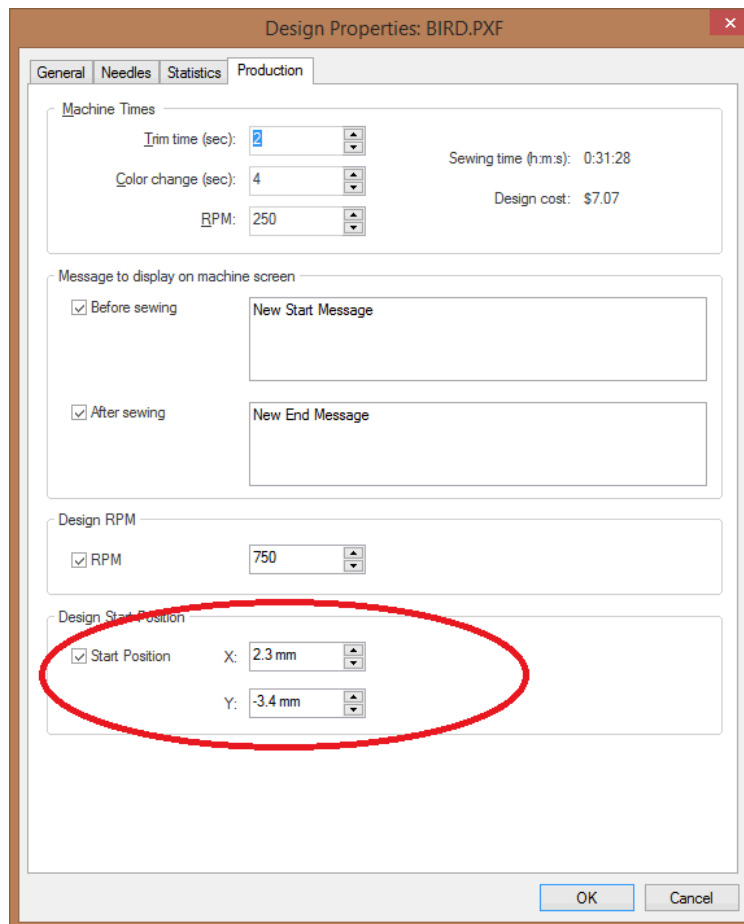
Improvements have been made to increase the resolution when saving designs as HPGL / PLT through the Export Applique Cut feature.

TBF Improvements

A problem where a color change was missing when writing a segment that also has a Stop with Trim command to a TBF file has been corrected.

Absolute Starting Needle Position

The Tajima TBF and TCF formats support moving the needle to a fixed start position. Tajima DG15 by Pulse now has the ability to set the absolute starting position. A design's starting position can be set through File-Design Properties and then selecting the Production tab. This information will be written to the TBF/TCF files when the design is saved.



POF File Support

A crashing problem saving older POF files with text segments as PXF files has been corrected.

Head Grouping

A crash has been corrected when creating a new Head Grouping project.

Export Email

Due to compatibility issues with 32 bit email clients, we have changed the Export-Email Design functionality to save the design and worksheet images to a folder on the PC. You can then attach these files to an email using your existing email application. DG will no longer automatically launch your email application.

DESIGN SPOOLER

Design Spooler Installation

You now have the option to not install Design Spooler when installing DG15.

LAN Settings in Windows 7

An issue has been addressed that would block users from enabling LAN settings on Windows 7 operating systems.

Design Queue Issues

An intermittent problem where incorrect design names were listed in the design queue has been addressed.

An issue has been corrected that can result in error 6003 when sending designs to the design queue when trying to resend a recently deleted design.

Report Generation

A problem where reports could not be generated and an error "Cannot open the file for reading on the Design Spooler (4002) is displayed has been addressed.

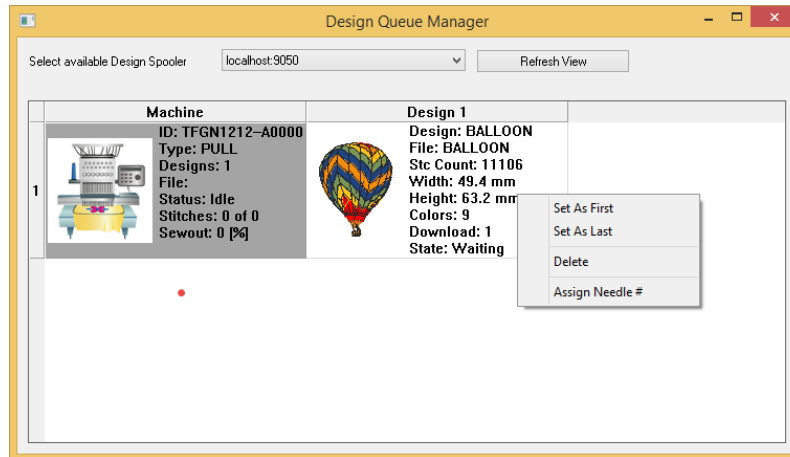
SQL Server For Design Queue

The design queue no longer requires Microsoft SQL Server Express or Microsoft SQL Server Local DB. Design Queue data is now stored in a text file named DesignList.txt in the folder c:\ProgramData\Pulse\Design Spooler\Design List\. Removing the SQL Server requirement for the design queue resolves problems and error messages that can occur sending designs to the queue when the SQL server is not properly configured.

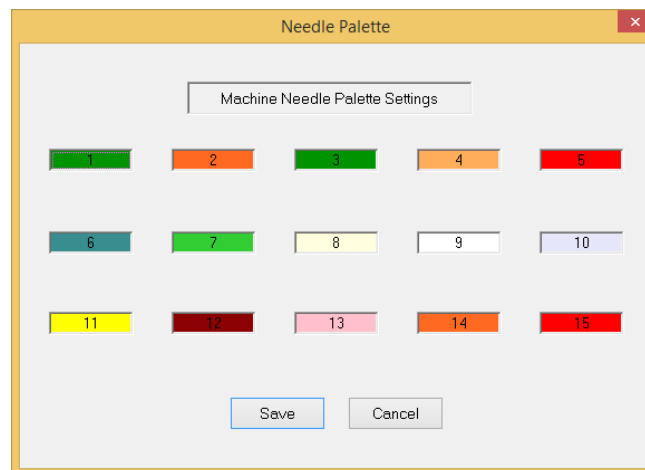
Microsoft SQL Server Express / Local DB is still required for machine reporting and Librarian and it remains part of the DG installation process.

Assign Needles

The ability to assign needles and commands to designs in the design queue has been updated in DG15. You can set needles in the design by right clicking on a design in the queue and selecting “Assign Needle #” option:

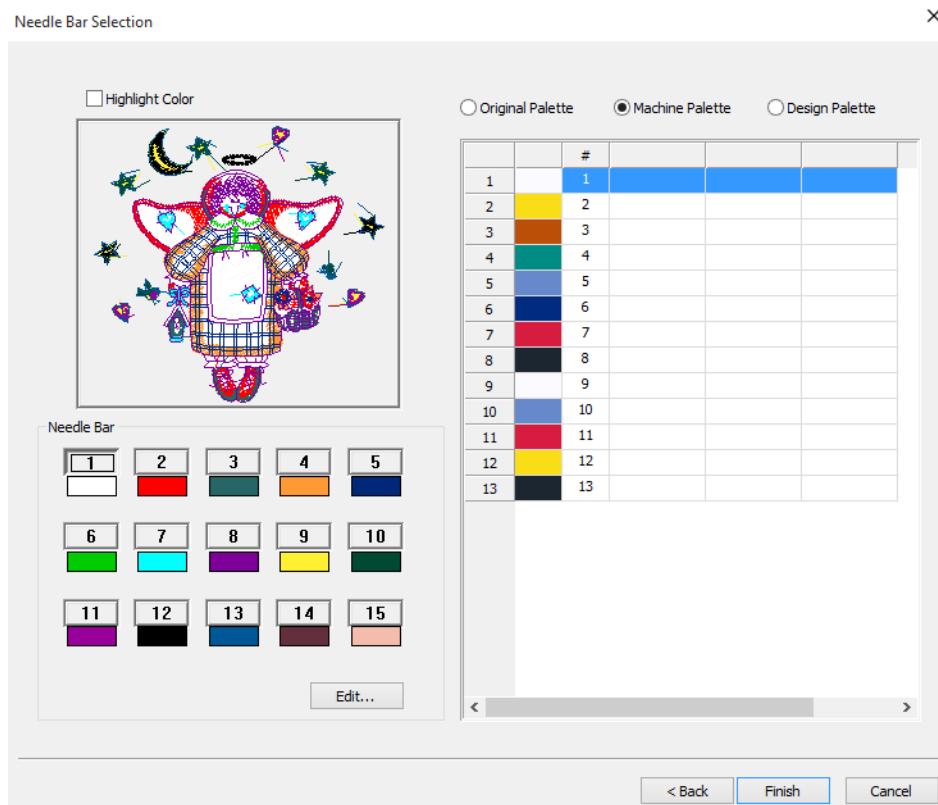


You will then be prompted to configure the colors for each needle on your machine. DG15 will remember the machine palette colors.



Once the colors for each thread on your machine are set, you can assign needles to the selected design in the queue.

The Assign Needle Number option will display a dialog showing each color change in the design.



You can select a color change from the list and choose a new needle from the needle bar to set the needle colors in the design. These needle commands will be saved into the design in the queue and will be used by the embroidery machine once the design is loaded.

The Assign Needle # dialog has the following options:

Original Palette – Colors in the design are displayed according to the palette in the PFX file.

Machine Palette – Colors in the design are displayed according to colors defined by the machine palette.

Design Palette – Colors in the design are displayed according to the palette in the PFX file. All areas of the design that use the same thread in the palette will be changed when the Design Palette option is used.

Edit – Displays the Machine Palette dialog. This dialog enables you to set the colors for each needle of your machine.

Barcode from Folder / Barcode From Librarian

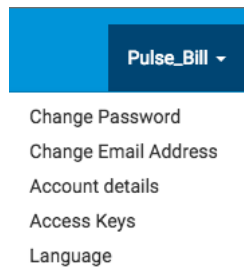
Stability improvements have been made in Barcode from Folder and Barcode From Librarian.

Design Spooler Connectivity

An issue has been addressed where Design Spooler disconnects from Pulse Cloud after two hours.

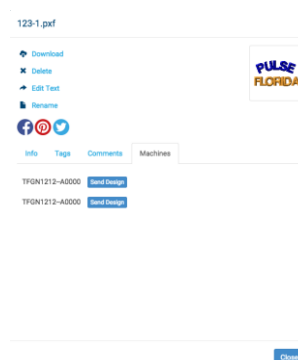
Design Queue Syncing

You can now send designs from Pulse Cloud to embroidery machines that are connected to your Design Spooler. In order to link your Pulse Cloud account with Design Spooler, your Design Spooler PC must be connected to the internet and you must obtain your access key from the Pulse Cloud website. You can find your access key by logging into your Pulse Cloud account and select Access Keys from the dropdown under your user name:



You may use any of the access keys associated with your account with Design Spooler. Enter your Pulse Cloud Access Key under Tools-Configuration-Spooler Settings to sync your Design Spooler with Pulse Cloud.

Once your Design Spooler is connected with Pulse Cloud, you can select a file in Pulse Cloud and choose the Machines option to send the design to the Design Spooler queue for the selected machine.



STITCH GENERATION

Applique Offset

A problem has been corrected relating to the calculation of the offset of borders in Applique segments.

Along Edge Traveling Route

The density calculation of satin stitches when the traveling route is set to “Along Edge” has been improved.

Overlap of Eccentric Sequins

DG15 now allows the ability to overlap Eccentric Sequins. In previous versions of DG, this functionality was restricted to avoid hitting previous sequins.

Fractal Fill

Improvements have been made in the generation of Fractal Fill stitches.

Option to Disable Spacing Restrictions for Sequin Segments

Previously, the spacing of sequins was never allowed to have a value of less than $-\frac{1}{2}$ of the tack-down diameter; this prevents the needle from striking the previous sequin when sewing the tack-down stitches of the next sequin. However, there are certain circumstances where experienced digitizers may want to have sequins overlap by more than this, i.e. to have a greater degree of negative spacing. In Tajima DG15 by Pulse, we have introduced a new setting for sequin and sequin fill segments, called “Enable spacing restrictions” - this is on by default. When enabled, this setting enforces the existing $-\frac{1}{2}$ tack-down diameter spacing limit; unchecking this setting removes this condition, and enables you to enter negative values for spacing as low as the $[-1(\text{tack-down diameter}) + 0.1 \text{ mm}]$.

The “Enable spacing restrictions” setting can be found on the Properties—Selection Settings panel, in the General area of the Sequin and Sequin Fill tabs. Absolute Starting Needle Position”

This setting is disabled for Manual and Eccentric Sequins.

LIBRARIAN

Icons in Librarian

An intermittent problem rendering icons in Librarian has been addressed.

Express and Librarian

The Express level of DG has been restricted so that users cannot move design elements when designs have been opened from Librarian.

AUTODIGITIZING

Color Reduction Improvements

Improvements have been made in the calculations used for color reduction for Autodigitizing.

THREAD CHARTS

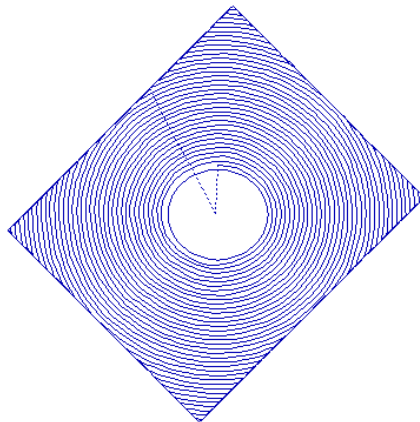
New Thread Charts

The Vista and Glide thread charts have been added.

STITCH TYPES

Shape Echo

Shape Echo is a new stitch type that can be applied to a closed shape with a hole. The stitches will spiral in one continuous running stitch from the center of the segment. Shape Echo is available in Artist Plus and Maestro levels of DG15.



Spiral Fill

Improvements have been made to the Spiral Fill Tool to work in coordination with artwork tools like circle.

USER INTERFACE

Worksheets

The worksheet color sequence is now updated when different presser foot settings are used.

Stitch Conversion Shortcut Key

The stitch type conversion shortcut key (=) is now supported using German and Slovak keyboards.

Color Sequence Printing

An issue has been addressed that could cause the Simplified Color Sequence printing to fail when designs contained many color changes.

Color Matching

The color matching feature from the Autodigitizing Tool has been implemented into the Needle/Thread Palette. The tool automatically matches colors from the selected thread chart.

Dialog Improvements

Improvements have been made to several dialogs within DG15 to optimize for 1366 X 768 resolution screens.

Edit Envelope

A problem that caused the Edit Envelope tool to not change the shape of segments has been corrected.

Vertical Text Justification

A problem where Vertical Text Justification was not applied has been corrected.

Japanese Language Translation Improvements

Dialogs have been updated translations in Japanese.

A problem importing styles saved with Japanese characters has been corrected.

A problem saving segments to a Japanese named font has been corrected.

Chinese Translation Issues and Stability Improvements

Translation and stability improvements have been made when DG15 is run using the Chinese Simplified and Chinese Traditional languages.

End Lock Icon

The End Lock icon is now applying the lock stitch setting to selected segments.

Autosave

A crashing problem has been corrected trying to recover designs saved using the Autosave feature.

LETTERING

Kerning Beads

Kerning beads will now move letters of multi-line text segments.

Monogram Wizard

A problem has been corrected where Decors and Frames were being generated even though these items were disabled in the Monogram Wizard.

Selecting the “None” option in the Décors list, now removes all decors.

Center Last Sewing Sequence for Monogram Fonts

A new sewing sequence named “Center Last” can be found in the Sew Sequence properties for 3 Letter Monogram Segments. This setting will ensure that the center letter of a 3 Letter Monogram is sewn last.

Shrink To Fit settings for Simulated 3 Letter Monogram Fonts

Shrink to Fit functionality is now available on simulated 3 letter monogram segments.

EDITING

Multiple Anchors

DG15 now has the ability to add multiple anchor points to duplicated segments

Enveloping Tool

Improvements have been made to the envelope feature to allow it to work properly on multiple selected segments.

Average Anchors

The average anchors tool has been changed to average all vertexes as specified by the dialog and then offset all vertexes by the specified amount.

DRAW FUSION

Problems Launching Draw Fusion

This version addresses an issue where Draw Fusion would not launch Corel Draw on Windows 7 PCs.